

Artigo ID:	<b>Knowledgebase FRP</b>	Versão:
Este artigo aplica-se a:	<b>SBE</b>	
Domínio:	<b>SBE</b>	
Pré-requisitos		
Localização		

## Problema / Sumário

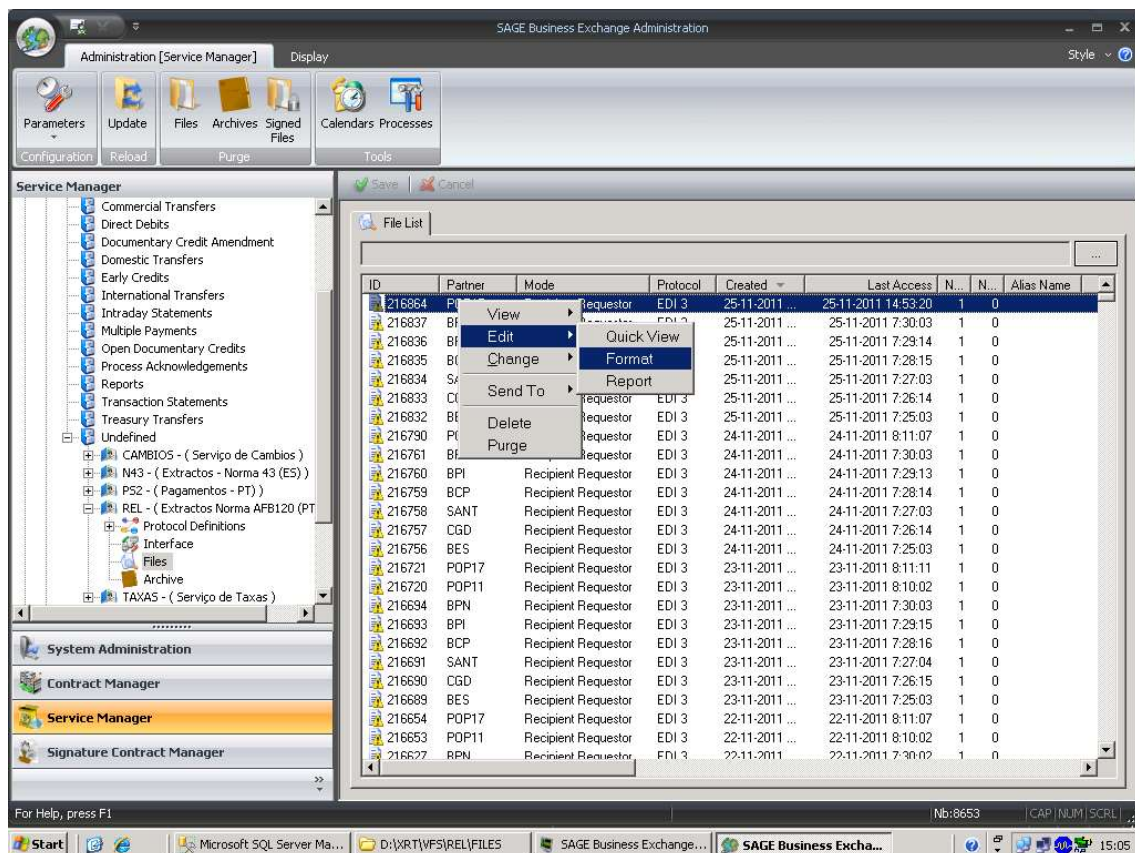
Visualização dos extractos bancários

## Descrição da Solução / Detalhes

*Sage Business Exchange*

Ir ao separador Service manager e procurar o serviço REL/Files

Selecciona a linha do ficheiro bancário que pretende visualizar e pressionando o lado direito do rato, escolhe Edit/Format



SAGE Business Exchange Administration

Administration [Service Manager] Display

Parameters Update Files Archives Signed Files Calendars Processes

Configuration Reload Purge Tools

Service Manager

Commercial Transfers  
Direct Debits  
Documentary Credit Amendment  
Domestic Transfers

Save Cancel

File List

PSD7D.tmp - Notepad

File	Edit	Format	View	Help	Alias Name
0100046	00393EUR2	00600000900	241111		
0000000000000	{SALDO INICIAL				
0400046	52800393EUR2	0060000090006241111	241111	COBRANCAS	BBVA IFIC 30034912158
0000000009153P					
0400046	43900393EUR2	0060000090091241111	241111	TRANSFERENCIA	CONTA CENTRALIZAD
0000000009153G					
0700046	00393EUR2	00600000900	241111		
0000000000000	{SALDO FINAL				
0100046	00393EUR2	00600011676	241111		
0000000000000	{SALDO INICIAL				
0400046	52800393EUR2	0060001167606241111	241111	COBRANCAS	EPAL 00632218248
0000000000520M					
0400046	43900393EUR2	0060001167691241111	241111	TRANSFERENCIA	CONTA CENTRALIZAD
0000000000520D					
0700046	00393EUR2	00600011676	241111		
0000000000000	{SALDO FINAL				
0100046	00393EUR2	00600016911	241111		
0000000000000	{SALDO INICIAL				
0400046	00300393EUR2	0060001691105241111	241111	TRANSFERENCIA	TR857249201111231
0000000023840{	P				
0400046	43900393EUR2	0060001691191241111	241111	TRANSFERENCIA	CONTA CENTRALIZAD
0000000023840}					
0700046	00393EUR2	00600016911	241111		
0000000000000	{SALDO FINAL				
0100046	00393EUR2	00600130110	241111		
00000845403090SALDO	INICIAL				
0400046	43900393EUR2	0060013011091241111	241111	TRANSFERENCIA	CONTA CENTRALIZAD
0000000030000{					
0700046	00393EUR2	00600130110	241111		
00000845103090SALDO	FINAL				
0100046	00393EUR2	00600149581	241111		
0000026203711PSALDO	INICIAL				
0400046	43900393EUR2	0060014958191241111	241111	TRANSFERENCIA	CONTA CENTRALIZAD
0000000009153P					
0400046	43900393EUR2	0060014958191241111	241111	TRANSFERENCIA	CONTA CENTRALIZAD
0000000000520M					

Start | Microsoft SQL Serv... | D:\VRT\WFS\REL\FI... | SAGE Business Exch... | SAGE Business Exch... | PSD7D.tmp - Note... | 15:06